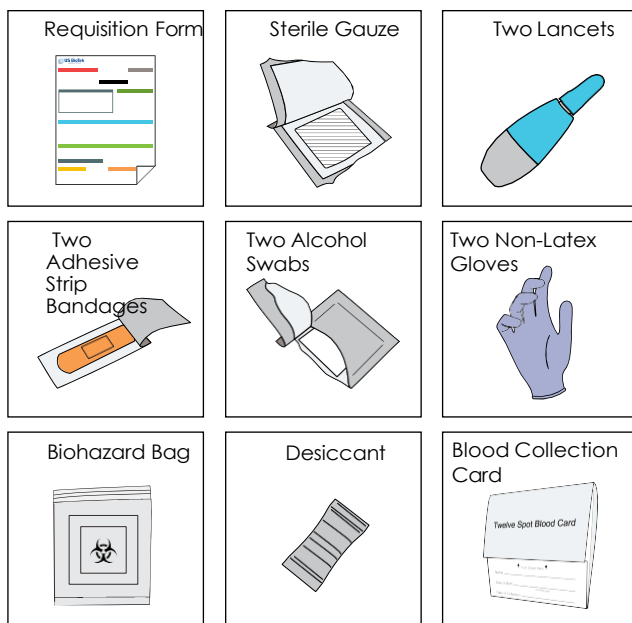


Content



Shipping materials are also

General

- Avoid strong repetitive pressure ('milking') on the pricked finger.
This may cause hemolysis or tissue-fluid contamination of the specimen.
- Do not rub or smear the blood sample.
- Air dry only.
- Missing or incomplete information on the test requisition form will delay the processing time of your specimen.
- Allow a sufficient quantity of blood to soak through to completely fill in the preprinted circle on the filter paper.
- Test results are sent directly to your practitioner's office

Diet

It is suggested that you maintain your usual dietary habits and consume a variety of foods when possible within a couple weeks prior to blood collection, unless

Avoid eating foods that may have potentially resulted in a previous adverse reaction and/or anaphylaxis, as

Warnings and Precautions

- The kit contains a biohazard bag containing a desiccant. To preserve the integrity of the desiccant, do not leave the bag open before, during, or after blood collection. Leave the desiccant inside the bag with the collected specimen and seal the bag tightly for shipment.
- The materials provided in the kit are for one time use only. Do not reuse the lancet. Do not reuse or use the blood collection paper for more than one blood sample.
- Do not perform this test if you are taking blood thinning medications or if you have a blood clotting disorder unless authorized by your healthcare practitioner.
- The lancet is not suggested for use on children younger than one year old. Pediatric lancets and heelsticks are

Intended Use:

US BioTek Laboratories Whole Blood Specimen Collection Kit is intended to be used as a medium to collect and transport a blood specimen to the laboratory for testing.

Medication

We strongly recommend consulting your healthcare practitioner prior to making any changes to your current medication regimen.

Immunosuppressive drugs such as oral or intranasal corticosteroids (e.g. prednisone, beclomethasone, fluticasone, triamcinolone) and topical cortisone



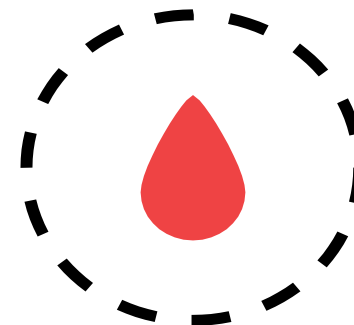
Regenerus Labs Ltd
Aero 14, Redhill Aerodrome
Kings Mill Lane
Redhill
Surrey
RH1 5JY

© 2021 US BioTek



DRIED BLOOD SPOT (DBS) COLLECTION & SHIPPING INSTRUCTIONS

Food & Inhalant IgA/IgG/IgG4 Antibody Assessment Panels
Candida Antibodies & Antigen Panel

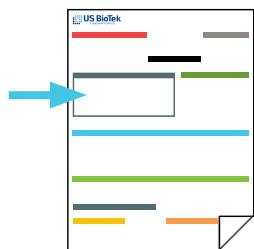


Read this document carefully before using the contents of this package.

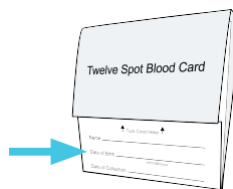
USBioTek Laboratories' Specimen Collection and Shipping Instructions for Dried Blood Spot (DBS) is permitted for use under the guidance of a healthcare practitioner. Please contact your



Preparation

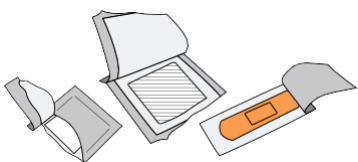


Requisition Form
Fill out Patient



Blood Spot Collection Card
Print your Name, Date of Birth, and Date of Collection in provided fields.
•Name on Card and Req. Form

Lay Out Collection Materials

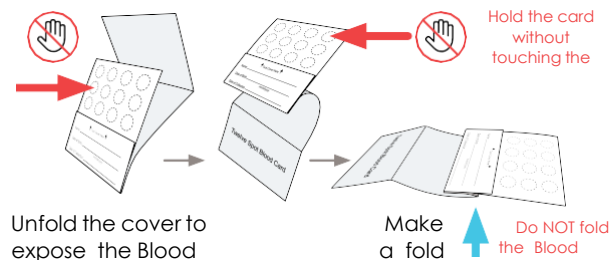


Alcohol Swab/Gauze/Bandage
Tear open packages, leaving swab, gauze, and



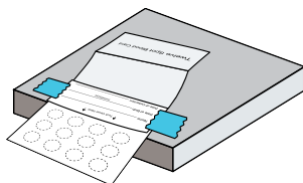
Non-Latex Gloves
Gloves are for collection

Prepare Collection Card



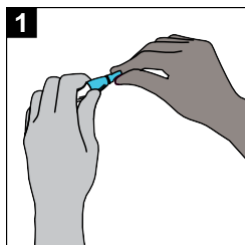
Tip:

Taping the outer cover to the edge of the table top may help stabilize the

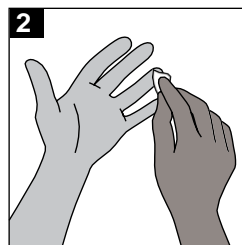


Wash hands for 30-60 seconds under warm water. Warming your hands before collection can increase blood flow to your

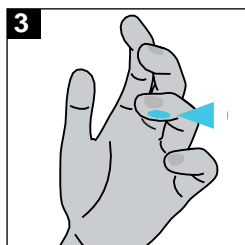
Collection



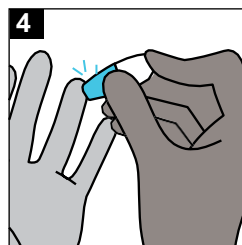
Twist off the blue tab to break seal on lancet.



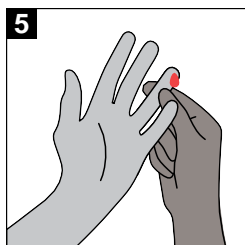
Use the provided alcohol pad to clean the tip of the finger



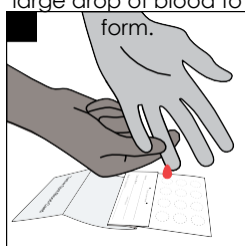
Place the tip of the lancet against the side of the fingertip.



Press down firmly until an audible



Gently press the finger from below the puncture site to allow for a large drop of blood to form.



Hold finger downward to allow blood to drop

Tip:

Filling more than the required number of spots is recommended if you have continued blood flow, ensuring ample specimen quantity for testing.

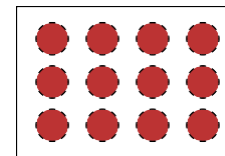
Make sure blood saturates through to



Once specimen collection is completed, apply the provided

Diagrams of the Blood Spot Collection Card

Valid Specimen:

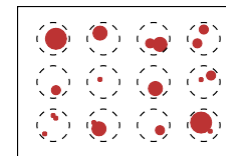


Front AND Back

Sufficient for Testing

Blood must saturate through to the back of the card

Invalid Specimen:



Front AND Back

Insufficient for Testing

Uneven and incomplete application will be

Drying

Air-dry completely. Prop the card up or leave taped on table and let air-dry for at least 3 hours. Keep away from moisture and sunlight. It is important that

Once fully dried, tuck the cover into flap as indicated. Insert the Blood Spot Collection Card into the biohazard bag containing the desiccant and seal tightly (each

Shipping

Shipping Within the UK

You will find in your kit a pre-paid Royal Mail return label. Please affix the label to the return box and place in a post box.

Shipping Outside of UK

Please email info@regeneruslabs.com at least 48 working hours before you wish to dispatch samples for further assistance.